

Weaving people into communities

Our guild has a wonderful way of connecting people. Even though we have only had a handful of in-person events lately, Zoom has created a new way of getting to know one another. Tricia Baldwin has been hosting Monday Meet-Ups with like-minded members who talk about hand stitching, knitting/crochet or quilting. The online chats often veer off topic, but offer a meaningful connection to those who participate. One regular member says that “when-ever I need something, I find it here.”

Have you made connections at the Fine Art of Fiber? Volunteering together, or participating in the boutique offers an opportunity to see our members’ work and share it with visitors to the show. The theme of the Women’s Journeys in Fiber exhibit is *Connections . . . Natural, Personal, Technical.*

I’m looking forward to connecting with many of you at the show.

– Jan Harrington,
NSNG President and Newsletter Editor



Jane M. Mason will teach a watercolor mini workshop on ZOOM – **Thursday, Nov 10 at 9:30 am (CT)**. Fee: \$10. To register, send an email to Jane, janemmason123@gmail.com and Elizabeth Guillette (mini workshop chair), ekguillette@gmail.com

Mini workshop: Watercolor painting

I’m excited about offering this watercolor mini workshop to you. I am a 3-year-ish member of NSNG, but have been to only one in-person meeting due to Covid and my schedule. My primary needle arts are: rug hooking, embroidery, and fiber collage.

No drawing or watercolor experience is required. This 90-minute workshop will be an overview of basic watercolor techniques and an introduction to watercolor pencils. Many needle art practitioners use these as a means of brainstorming and generating ideas. I use them every day!

When you register, I’ll send you a supply list and the Zoom link to this virtual class.

Any watercolor paints, brushes, and paper will do for this mini workshop. I recommend you get some watercolor pencils to enjoy the fun of those! Due to supply chain issues, sometimes materials are hard to find, so if interested, I recommend getting your materials quickly.

I have a maximum of 14 students. Contact me if you have any questions.

Jane M. Mason, 314-330-0561

Join our Monday Meet-Ups!

Calling all Members! Our monthly Zoom Meet-Ups have become the place to share your current projects, get new ideas, and catch up with fellow needle arts enthusiasts. Lots of Show & Tell and open discussion. Share your latest project (especially your progress on workshop projects!), ask for advice on a challenging project, say “hello” face-to-face (almost) with old friends. NOTE to NEW MEMBERS: This is a great opportunity to connect with other members and learn more about NSNG.

- **Monday, Nov 14** – Hand Work (this includes embroidery, needlework, embellishment and beading)

- **Monday, Nov 21** – Knitting and Crochet

- **Monday, Nov 28** – Open Topic and Quilting

Due to holidays in December, we will hold one meet-up on **Monday, Dec 12**. All fiber arts are welcome!

- To receive a Zoom link to the virtual meet-ups, please send an email to meetups@nsng.org.

– Tricia Baldwin, *Special Events Chair*

NSNG CALENDAR

Tuesday, Nov 1 • 9:30 am (CT) – ON ZOOM ONLY

FIBER ARTIST – LISA BINKLEY

Continuous Threads

In-Person Workshop: Wed, Nov 16 – Fri, Nov 18

• • •

Tuesday, Dec 6 • 11:00 am – AT GLORIA DEI

HOLIDAY POTLUCK & Member Challenge

• • •

VIRTUAL MEETINGS ONLY: Jan 3 & Feb 7

HYBRID MEETINGS: March 7, April 11 & May 2

SUMMER SEMINAR IN JUNE (Dates and artists TBA)

SUMMER PICNIC • July 11

Details inside and on our website: nsng.org



Cynthia Boudreau

My daughter is modeling the Peoples Choice Award jacket from the *Uncommon Threads* fashion show at Fine Line Gallery. This jacket with matching beret was one of five original garments inspired by well known abstract artists. I included a coat called Madame Matisse; a cape in Klee's geometric patterns; a vest with Klimt's ovals and a fun jacket with Keith Harding's characters. The winning swing jacket above represents Wassily Kandinsky's circular patterns. All original nuno felted fabric of merino wool on silk chiffon. Each piece then carefully tailored. Several of these garments will be included in the FAOF boutique.

Fiber Art Divas Show • Nov 1-12

We have some bonafide Fiber Art DIVAS in our midst. Check out their show and sale, *Elements of Innovation*, at the Naperville Fine Art Center & Gallery, 508 N. Center Street in Naperville, **November 1 - 12, 10:00 am - 4:00 pm** each day.

• *If you have work in a show or exhibit, let Jan Harrington know for a future newsletter!*



Barbie Eich

Thank you to **Bill Keller** for helping me to model **this coat that I made**. I saw an ad for personalized fabric, so I ordered some. The white text printed in a grid is BILL BARB EICH. I made a two-person coat using a pattern for a two-person coat. Yes! Me, Barbara, and my husband, Bill, did take a walk wearing this coat. "ONCE"!!!

TWO SEWING MACHINES FOR SALE:

- Bernina's Artista 200E is the perfect marriage of computer and sewing machine. With its color touch screen, the 200E is a high-tech, intuitive machine that allows ample sewing flexibility and creativity.
- Viking Husqvarna +1 computerized sewing machine incorporates the most advanced computer and sewing technology. Sewing on this Viking is fast, easy, fun, and professional.
- Asking \$1,000 for each, with pickup only, no shipping. Thank you for considering this wonderful opportunity. Email Barbie's daughter for details. Laurie Korte, lauriekorte@me.com

Barbara Schneider

This piece, called *Tree Bark Fragment. Car 5*, was accepted into Quilt National 2023, sponsored by The Dairy Barn, and will travel for 2 years as the show goes to other venues. Irene Roderrick was one of the judges. I used Fosshape, which is a soft, felt-like material that can be manipulated into shapes by applying heat. I will be sharing this technique in my May workshop.



Virtual classes at NSSC

The North Shore Senior Center (NSSC) in Northfield offers a variety of classes for a small fee. **Debbie De Palma** suggests this virtual class on **Wednesday, Nov 16, 10:00 – 11:30 am**.

- *Faith Ringgold: The Story of Quilts and Painting*
Exploring the work and life of artist and award-winning author Faith Ringgold, art historian Jeff Mishur discusses a selection of works pertaining to important themes, including the challenges faced by women artists, the relationship between fine art and craft, and African American history. Jeff will focus on Ringgold's paintings from the 1960s to 70s and her painted story quilts from the 1980s through the 2000s.
- For information about the center and to register, go to <https://www.nssc.org/fall-2022-catalog>. Click on "Browse for classes" then "Art and Architecture."



Bernina's Artista 200E shown with many accessories



Viking Husqvarna +1

Fine Art of Fiber • Nov 4 - 6

The 2022 show and boutique run from 10:00 am - 5:00 pm at the Regenstein Center of the Chicago Botanic Garden.

• Help spread the word by sending the digital postcard to friends and acquaintances. This can be found on the website, under guild member forms, <https://fineartoffiber.org/guild-member-forms/>



(Jan sent it an email recently.)

• Parking and admission fees: We are not using a paper parking pass this year. Just tell the people at the gatehouse and the admission kiosk that you are volunteering at the Fine Art of Fiber/dropping off for the FAOF/ or picking up from the FAOF. Handicapped parking is available

in Parking lot #1; there is no handicapped parking available behind Regenstein due to construction.

- If you are volunteering, please bring your guild name badge.
- Dropoff of accepted exhibit submissions is from **9 - 11 am on Thursday, November 3 at Regenstein**. Please note that entrance from 8-10 is typically reserved for Garden members only, so be sure to tell Garden staff that drop-off and volunteer work starts at 9.
- Pick-up on Sunday will not begin until approximately 5:30 when all pieces have been removed from the walls and display areas. First items out the door are sold pieces. The Garden closes at 5 pm on Sunday; please arrive a little earlier before the entrance gate closes. You will be given a sign-out number by Sue Sweeney so that you do not have to wait in line—I will call out your number and a runner will accompany you as you pick up your pieces for sign-out.
- If you have work in the exhibit, be sure to sign up for your volunteer slot(s). Others may also volunteer. Link for our SignUp Genius app: <https://www.signupgenius.com/go/5080549a8a92aa7ff2-volunteer>. If you need assistance, contact Linda Norby, linda.norby@gmail.com.
- Ronna Leibach is the contact for the boutique, bows23@gmail.com.
– Fine Art of Fiber Chair, ncflores52@gmail.com

Holiday Potluck • Dec 6

We are happy to announce that our in-person potluck is back and will be held at Gloria Dei on **Tues, Dec 6 starting at 11:00 am**. Member Challenge entries will be displayed and 3 winners will be selected by attendees (*see below*).

• Bring a dish to share! The guild will provide beverages.
• Show & Tell. Share your latest projects.
• Gloria Dei collects canned goods for the Northfield Township food pantry and toiletries for the Night Ministry in Chicago. **Please donate something to either cause:** Canned goods – such as soup, beans, fruit, protein (tuna, chicken, stew, etc); coffee, tea. Toiletries – toothbrushes, small toothpaste, soaps, lip balm, deoderant.

• **“GENERATIONS”** is the theme for our **FALL 2022 MEMBER CHALLENGE**. Generations can mean families, years, crops, reproduction. It can also mean stages – or generations – of an idea or process. Use your sewing needle, sewing machine, knitting needles, crochet hook or other needlework techniques. Use your favorite technique – or use them all – for at least 75% of the work. All work must be your original design and completed in the last 2 years. Work that has been previously exhibited at guild functions is discouraged.

Entries will be displayed at our **Holiday Potluck on Dec 6th**. Members will vote on 3 winners who will receive a certificate for use in next year’s NSNG workshop of their choice: 1st place – \$100 certificate; 2nd place – \$75 certificate; 3rd place – \$50 certificate

• Please **notify Penny Burns by Dec 1st** if you will participate in the challenge. (Entries are accepted even if you cannot attend the meeting in person.) To participate and vote, please be sure your membership is current. Include **your name, the name of the entry, and a description of techniques used**.

– Member Challenge Chair,
[Penny Burns, pburns@jbosh.com](mailto:pburns@jbosh.com)

NSNG WORKSHOP REGISTRATION & POLICIES

- Workshop Registration is made available to NSNG members before being made open to the general public.
- Registrants must have a fully paid NSNG membership and a current Participant Agreement on file in order to qualify for the member price for a workshop.
- The number of participants in a workshop is determined by the instructor and is not open to NSNG’s discretion.

Non-Members:

- A non-member must pay an additional \$20 fee and have a current Participant Agreement on file.

Workshop Registration Procedure:

- Space in the workshop cannot be guaranteed or held without payment.

Registration and Payment:

- Payment is by credit card on the website, NSNG.org
- If the workshop is full, you can request to be put on the waiting list.

Waiting List:

- In the event that all spaces in a workshop are filled, a waiting list will be started for that workshop; there is no charge to be on the waiting list.
- A potential registrant on the waiting list will be contacted if a currently registered participant wants to sell their spot

in the workshop.

- The sale must be transacted through the Workshop Registrar.
- If there is no waiting list for the workshop, no refund is available.

Supply Lists:

- A supply list is available for each workshop on the NSNG website.
- The supply list and logistics are sent in a reminder email to the workshop participants about a month in advance of the workshop.

Direct inquiries to Workshop Registrar,
Janet Tuzzolino,
jmtuzz@gmail.com, 847-707-1739

Fiber Artist Lisa Binkley

Lisa Binkley holds a B.S. in Textiles & Design from the University of Wisconsin-Madison and a Master's in Urban Planning from the University of WI-Milwaukee. Formerly a public policy analyst, she has maintained an active fiber art studio since 2000 and has been teaching fiber art



workshops since 2007. Her award-winning artwork has been selected for national and international exhibitions such as the American Quilters' Society, the International Quilt Association, CraftForms to name a few. Lisa and her artwork have been featured on local and national television and in internationally distributed books and magazines. Her art is represented in public, private and corporate collections. She enjoys sharing her passion

for fiber art through her artwork, classes and lectures. She teaches throughout the U.S. and Internationally. She and her husband, Ed live in the woods of Madison, WI. with 2 young adult children and their big fluffy dog.

• Website: www.lisabinkley.com

VIRTUAL MEETING AND LECTURE:

Tuesday, November 1, 9:30 am (CT) – *Continuous Threads*

Lisa will show slides of the many art pieces she has made. She will talk about her development as a fiber artist. In addition to talking about her inspiration, she will talk about the various techniques she uses in her pieces. Lisa will focus on the many ways our lives feed our creative process and can be the inspiration for our work as stitchers.

* IN-PERSON WORKSHOP: *In the Boro Spirit*

FEE: \$195

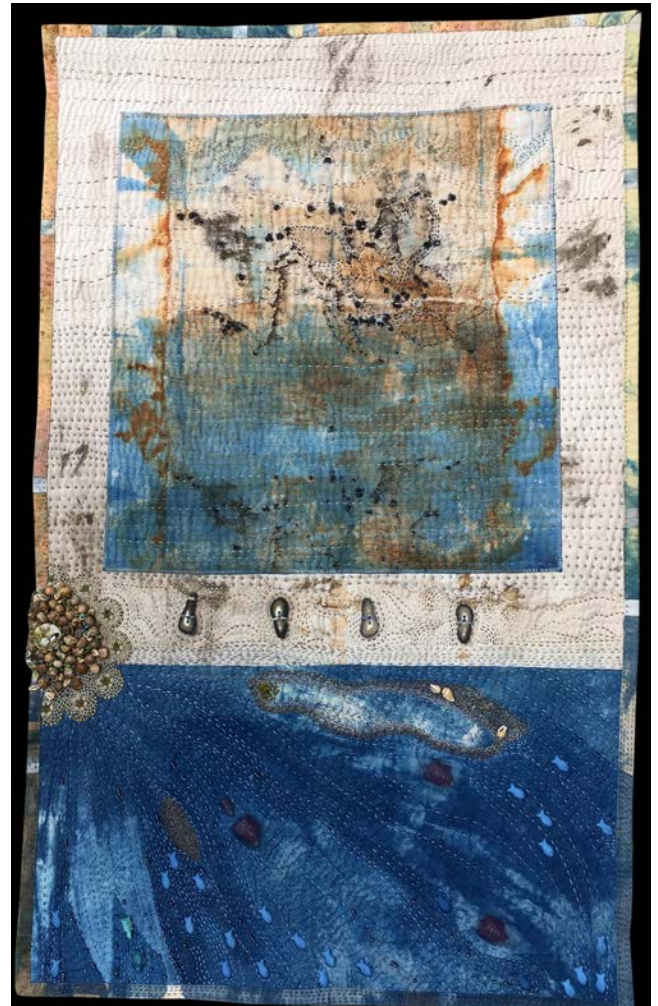
Wed, November 16: 1:00 pm – 4:00 pm (CT)

Thurs, November 17: 9:30 am – 4:00 pm (CT)

Fri, November 18: 9:30 am – 4:00 pm (CT)

Boro mending, kantha cloth, the Quilts of Gee's Bend. Each of these evokes images of old, worn fabrics, simply but beautifully stitched for a new purpose out of need and salvaged cloth. Born of necessity in diverse cultures worldwide, contemporary fiber artists can learn much from these traditions both technically and aesthetically. In the workshop we explore the traditions that created these textiles and then look to them for inspiration in creating new works of fiber art.

Beginning with pieces of old fabrics-vintage linens, pieces of worn jeans, even bits of blankets or tattered garments-we select, curate, layer, and hand stitch them into new looks and new life. Techniques explored include non-traditional hand piecing and applique, hand quilting with heavier threads, inclusion of repurposed embellishments such as shirt buttons and beads from old jewelry, as well as design considerations in creating our compositions. This workshop is a meditative blend of history, hand work, repurposing, and art making. Some hand stitching experience is helpful, but this class is suitable for all levels.



*** Workshop Location:**
Kingswood United Methodist Church, Room 114
401 W. Dundee Road, Buffalo Grove, IL

Lisa Binkley's workshop is full. To be put on the waiting list, contact Janet Tuzzolino, jmtuzz@gmail.com

Book Artist Shawn Sheehy

Shawn Sheehy has been teaching book arts courses and workshops on the national level for over 20 year, including stops at the Center for Book Arts, San Francisco Center for the Book, MCBA, Penland, Arrowmont, FOBA, Pyramid Atlantic, and PBI. His broadsides and artist book editions have been collected by such prestigious institutions as Stanford, Carnegie Mellon, University of Chicago, Library of Congress, UCLA and Harvard. He has created two trade pop-up book: *Welcome to the Neighborhood* (2015) and *Beyond the Sixth Extinction* (2018). Both were published by Candlewick Press and won numerous awards. He holds a Book Arts MFA from Columbia College Chicago.



• Website: www.shawnsheehy.com

VIRTUAL LECTURE: Tuesday, Jan 3, 2023, 9:30 am (CT)
A Crafted Tour of Local Ecology

Shawn's pop-up books frequently explore the ecology of communities of wild creatures. Taking a novelty-book approach to story-tell permits Sheehy to incorporate word, image, and 3D-structure. This approach also provides a useful tool for gentle environmental politics. Sheehy will discuss both the conceiving and executing of work in this lively presentation.

VIRTUAL WORKSHOP: *Native Wildflowers Pop-Up Book*
FEE: \$175 (includes kit)

Tues, January 3:
1:00 pm – 4:00 pm (CT)
Wed, January 4:
9:30 am – 4:00 pm (CT)
Thurs, January 5:
9:30 am – 4:00 pm (CT)



Jump-start you 2023 garden dreams by building this bound collection of sculpted paper blooms. Kitted with a pre-cut collections of color cardstock, you will fold and glue a dozen native wildflowers. Using boxes from your own recycling bin, you will assemble your structures into an elegant long stitch binding. There will be extensive conversation about tools, materials, technique, contemporary trade pop-up books, and ideas for further study. No previous experience is necessary.



Shawn Sheehy's workshop is full. To be put on the waiting list, contact Janet Tuzzolino, jmtuzz@gmail.com



Nature Artist Leslie Marsh

Leslie Marsh is driven by her love of nature and a fascination for cultural and family history. Using metal, stones and vintage findings, she forges relic-like book covers that call to mind medieval treasure bindings created during the Middle Ages. Leslie also spends a lot of time experimenting with the marks left by leaves on paper or fabric. The resulting botanical prints form signature wrappers used in most of her work and in the bags that hold her books. Leslie lives in Topsail Beach, North Carolina, with the man of her dreams and their dog.



• Website: www.leslie-marsh.com

VIRTUAL LECTURE: Tuesday, Feb 7, 2023, 9:30 am (CT)
The Duck, The Dog, and the Dollar

We never know where the paths in life will lead us, but a little positive reinforcement never hurts. During this presentation, Leslie will share examples of her work and talk about how following her passions and curiosity led to a late-in-life so-called career in art.

VIRTUAL WORKSHOP: *Woven Impressions – Nature Printed Book of Wonders*
FEE: \$135

Tues, Feb 7: 1:00 pm – 4:00 pm (CT)
Wed, Feb 8: 9:30 am – 4:00 pm (CT)
Thurs, Feb 9: 9:30 am – 4:00 pm (CT)



Combining methods of mark making using leaves and other natural materials, and then building on bookbinding techniques that have been used for thousands of years, Leslie will share with you the steps for making a beautiful hand-printed and bound book during this workshop.

You will learn the addictive art of brayer printing to create the nature-printed pages that fill this 5" x 7" leather-covered book. You will also learn two binding techniques to stitch and then weave the spine of this stunning and unique book.

While circumstances don't allow for students to ecodye leather themselves, Leslie will provide a piece of printed leather for the cover in students' kits and discuss the process used to create it.

Leslie Marsh's workshop is full. To be put on the waiting list, contact Janet Tuzzolino, jmtuzz@gmail.com



Writer, Painter and Joomchi Artist Jiyoung Chung

Jiyoung Chung is an internationally known Joomchi artist, painter and freelance writer who shows her works nationally and internationally. She has developed an innovative method for utilizing a traditional Korean method of papermaking called Joomchi into contemporary art form.

Jiyoung (BFA, Painting from RISD, and MFA, Print/Media from Cranbrook Academy of Art) has had numerous solo shows in Korea, USA, Australia, France, Finland, Romania and UK. In 2010, she curated the International Korean/American Joomchi show for European Patchwork Meeting in France, which later toured in Korea and in the US. She authored a 'How-to' book titled, "Joomchi and Beyond." In 2012 she was awarded a "Award of Excellence" by the American Craft Council/Baltimore show and the Adrianna Farrelli Prize, "Excellence in Fiber Art," Philadelphia Museum of Art Craft Show.

She has taught Joomchi at various institutions such as the Rhode Island School of Design (RISD), Univ. of Minnesota, Penland School of Craft, Arrowmont School of Craft, Haystack School



of Craft and Snowfarm, among many others.

Joomchi is a 500 year old Korean paper-making technique that uses water to seal several layers of thin handmade paper together to form a single strong sheet. Jiyoung Chung has brought her unique artistic sensibility to this medium. Her colorful and rich textural paper collages read as poetic statements or narratives and have an appealing cloth-like texture. Chung likes to think of the Joomchi paper-bonding process as 'air stitching,' or 'capturing the whispers of womens' stories' in the layering of the papers.

She finds Joomchi-making both an expressive and a meditative process.

The layering process of Joomchi has significance for Chung – "It's like life," she says, "Through hardships we become stronger, just as the paper does. In the process of breaking down and forming new bonds, the paper becomes stronger." – excerpt from "Joomchi & Beyond" by Jiyoung Chung.

• **No website at this time.**

LECTURE: Tuesday, March 7, 9:30 am (CT)
Joomchi and Beyond

This lecture offers participants the opportunity to become acquainted with its history, practice and role in Korean society, as well as reinterpreted adaptations into contemporary art form; surface design, collage, new way of drawing, wearable, unconventional body ornament or sculptural object: 2-D & 3-D either functional or fine art oriented.

IN-PERSON WORKSHOP: *Why Not Joomchi* FEE: \$200

Tues, March 7: 1:00 pm – 4:00 pm (CT)

Wed, March 8: 9:30 am – 4:00 pm (CT)

Thurs, March 9: 9:30 am – 4:00 pm (CT)

In this workshop you will learn how to make this unique Korean traditional way of making textured handmade paper by using water and eager hands. The terminology originated from "making a Joomoney (pouch or pocket)." It creates strong and textural surfaces. As it is worked, the surface becomes more elegant like leather. It can be made into self-standing or suspended sculpture. Joomchi is a new way of creating trays, lanterns, clothing, shoes, purses, etc.

REGISTER FOR THIS WORKSHOP ONLINE AT OUR WEBSITE: www.nsong.org

Artist Sarah Chapman

A studio jeweler and educator for over twenty-five years, Sarah Chapman's professional background is a hybrid of academic, studio art, and education studies at Northeastern Illinois University combined with an ongoing love for self-directed exploration of metalsmithing through research and workshops.



Sarah grew up in Chicago and currently lives and works in Minneapolis.

Chapman makes hand-fabricated metal jewelry (shown below), aesthetically merging the industrial and natural worlds with an emphasis on functionality. Each piece is carefully

considered and built, from the initial design process, to roller-printing patterns onto sheets of metal, using different techniques for forming, and finally, to incorporating stones and oxidizing the final pieces of jewelry.

While Chapman's work continues to be inspired by architecture and by nature as architect she is currently exploring forms and building processes of ancient sea vessels and the vast colors, forms and shapes of jellyfish and other sea creatures.

• Website: www.chapmanmetals.com



*** LECTURE: Tuesday, April 11, 9:30 am (CT)
Constructing Time and Place**

Sarah Chapman will discuss how the limitations of time and place formed the foundations of her art practice and the evolution of her body of work. Early teaching experiences introduced and reinforced the idea that it is possible to create thoughtful well-made art with limited tools and a limited workspace. Sarah will also talk about key experiences in places/spaces that have inspired past bodies of work and continue to inspire her current work.



*** IN-PERSON WORKSHOP:**

Hydraulic Press: Metal Sampler Quilt

FEE: \$345

Tues, April 11: 1:00 pm – 4:00 pm (CT)

Wed, April 12: 9:30 am – 4:00 pm (CT)

Thurs, April 13: 9:30 am – 4:00 pm (CT)

Through a combination of demonstration and practice, this fast-paced workshop will introduce participants to creating form and texture in metal with the hydraulic press to create a "sampler quilt." Participants will learn how to achieve results not easily accomplished with any other methods by using the hydraulic press to experiment with techniques such as embossing, pillowing, bending and die-cutting. Participants can display their sampler quilt as a sculptural metal wall hanging. We will discuss how these techniques can easily be used to create wearable pieces as well.

Workshop participants will learn to utilize mechanical or "cold connections" that require just a few tools and no soldering. Cold connections will be used to "piece" our metal quilt together, fasten metal layers to one another, and incorporate found objects like beads and shells. We will cover several categories of cold connections such as wire wrapping, mushroom rivets, tube rivets, stitching, staples, and using miniature nuts and bolts. Patina chemicals will also be available.

While this is an introductory level workshop, some fundamental metalwork experience is recommended. Skills needed to satisfactorily complete the project include the ability to use a jeweler's saw frame and prior experience with filing metal.

*** APRIL MEETING AND WORKSHOP LOCATION:**

First Congregational Church of Wilmette, 1125 Wilmette Ave, Wilmette, IL 60091

REGISTER FOR THIS WORKSHOP ONLINE AT OUR WEBSITE: www.nsong.org www.nsong.org



Textile Artist Barbara Schneider

Barbara Schneider began a second career as a textile artist in 1996 when she discovered the pleasure of working with cloth, paint, dye and thread. Her interest in the Japanese concept of Wabi-Sabi strongly influences all of her art. Her current work is exploring aspects of conservation and environmental issues. She has an extensive background in surface design and teaches as well as exhibits nationally and internationally. Her artwork is in many private and public collections including the International Quilt Center, the National Quilt Museum and the McHenry County College permanent collection. Her studio is at The Starline Factory in Harvard, IL.



Barbara is an amazingly accomplished artist, and has completed many series including: "Observations: Walking in Wonder" –

a series of twenty-seven hand-stitched artworks, each piece based on a particular McHenry County Conservation District site. (Boger Bog Conservation Site – shown below). Ultimately all of her series are about reflection – whether physical, mental or emotional. It is what she does throughout her work process as well as what she hopes viewers do as they look at the completed work.

• Artist's Statement:
My on-going interest in the Japanese concept of Wabi-Sabi, finding beauty in things that are imperfect, impermanent and incomplete is at the core of all of her artwork. I like to capture the essence of images made of light and movement, images that are infinitely variable. What does the eye see? What does the camera see? What does the mind see?

• **Websites:** www.barbaraschneider-artist.com; www.artclothnetwork.com; saqa.com

IN-PERSON WORKSHOP: *Creativity Through Nature: Shaping Dimensional Artwork*

FEE: \$245

Tues, May 2: 1:00 pm – 4:00 pm (CT)

Wed, May 3: 9:30 am – 4:00 pm (CT)

Thurs, May 4: 9:30 am – 4:00 pm (CT)

The workshop will concentrate on teaching a variety of techniques using Fosshape and Lutrador to create dimensional artwork. We will also explore a limited number of other materials that can be shaped, sewn, painted and formed in various ways.

During the workshop, Barbara will be creating rocks and tree bark fragments as a way of demonstrating techniques. You may want to do the same or follow your own ideas for creating nature based dimensional shapes or something else entirely.

You will learn to create supports for your work, various ways of shaping the Fosshape with heat, stitching, burning, stretching and anything else you can think of.

We will also paint, stitch, and add other elements to finish the work in various ways.

LECTURE:
Tuesday, May 2, 9:30 am (CT)
Walking in Wonder:
Observation, Creativity
and Nature

Barbara's current work is focused on creating art that explores nature, conservation and the environment. The lecture will take you for a 'walk' through the development of several projects. She will show how she makes use of observation to create large, shaped artwork that take us deeper into nature or that give you a better understanding of the environmental changes that have changed Illinois over the past two centuries. The work helps her understand the natural world in new ways. She hopes you will see with new eyes at the end of the presentation.

REGISTER FOR THIS WORKSHOP ONLINE AT OUR WEBSITE: www.nsg.org

President	Jan Harrington	847-965-6935	janQharrington@gmail.com
1st Vice-President	Melanie Terasaki	847-491-6448	melanieterasaki@me.com
2nd Vice-President	Nancy Nicholson	847-533-4818	nancy@nicholson.net
Secretary	Sylvia Dresser	847-945-6095	sylviadresser@gmail.com
Treasurer	Cindy Oppenheimer	847-722-9561	cb_bus@comcast.net
Membership Co-Chair	Cynthia Boudreau	630-240-9445	cboudreau391@gmail.com
Membership Co-Chair	Dee McKenna	224-381-3609	djbwmck@att.net
Workshop Registrar	Janet Tuzzolino	847-707-1739	jmtuzz@gmail.com
Hospitality (<i>Acting</i>)	Luan Wold	847-644-4705	luanwold@gmail.com
Mini-Workshop Chair	Elizabeth Khoodikians-Guillette	708-386-6004	ekguillette@gmail.com
Publicity Chair	Frances Krueger-Jackson	773-784-8766	fran@franniesfelts.com
Member Challenge	Penny Burns	312-590-1646	pburns@jbosh.com
Special Events Chair	Tricia Baldwin	847-650-7908	baldwintricia2@gmail.com
Fine Art of Fiber Chair	Nona Flores	847-951-0814	ncflores52@gmail.com
FAOF Assistant Chair	Valerie Koppenhaver	224-522-3000	koppenhaver@comcast.net
FAOF Assistant Chair	Bill Keller	773-610-7005	bkforge@sbcglobal.net
Newsletter Editor	Jan Harrington	847-965-6935	janQharrington@gmail.com
Service Chair	Gretchen Alexander	847-257-2507	gretchen.alexander@sbcglobal.net
Webmaster	Valerie Koppenhaver	224-522-3000	koppenhaver@comcast.net
Past President	Luan Wold	847-644-4705	luanwold@gmail.com

FOR YOUR INFORMATION

The purpose of the North Suburban NeedleArts Guild is to foster the art of needlework and to encourage a high standard of design, innovation, and technique in various forms of fiber arts. New ideas and techniques are developed through lectures, workshops and other group gatherings. Members are encouraged to show their own talents at meetings.

- **MEMBERSHIP:** Annual membership dues are \$50. Our membership year starts on Aug 1 and ends the following July 31. If you have a change of address, phone or email address, contact Membership Co-Chair: **Cynthia Boudreau**, Cboudreau391@gmail.com

- **MEMBERSHIP DIRECTORY:** A digital directory was sent to all members in October. It includes names and contact info for members, calendars, by-laws and other information about NSNG. Updates will be made as needed. *It is for your personal use only!*

- **IN-PERSON EVENTS AND WORKSHOPS** are held at **Gloria Dei Lutheran Church** (1133 Pfingston Rd, Northbrook) unless otherwise noted. Please park in the back lot, east of the church, unless you need access to the handicapped parking in front.

- **GUESTS ARE WELCOME:** Guests and friends are free the first time they attend, after which they must join the Guild to continue attending.

- **FREEBIE TABLE:** Members may bring in fiber-related items they no longer need. **PLEASE take home any unclaimed items!**

- **MINI WORKSHOPS** are taught by NSNG members. If you would like to teach a class, or have questions, contact Mini Workshop Chair: **Elizabeth Khoodikians-Guillette**, ekguillette@gmail.com



Loose Ends & Gathered Threads

The newsletter of the North Suburban NeedleArts Guild is published monthly (except for the summer). A digital copy is sent out via email a few days before each meeting. It's also available on our website.

**Our Dec issue will be sent out the end of Nov.
(Submission deadline: Nov 20)**

Please contact Newsletter Editor **Jan Harrington** with Show & Tell, announcements or corrections:
janQharrington@gmail.com

WEBSITE: www.nsng.org

Post your projects on INSTAGRAM!
@needleartschicago
#northsuburbanneedleartsguild

Share your work and stories of interest
on our FACEBOOK page:
North Suburban NeedleArts Guild